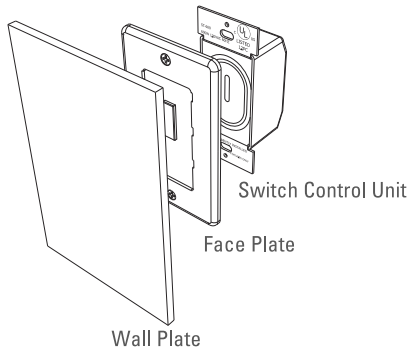
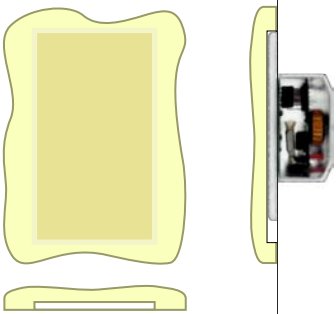


ANIGMO

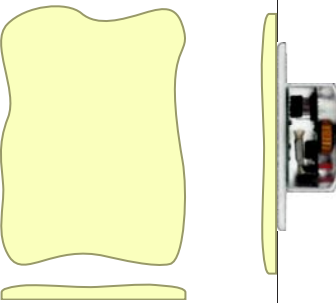
Touchless Electronic Switch



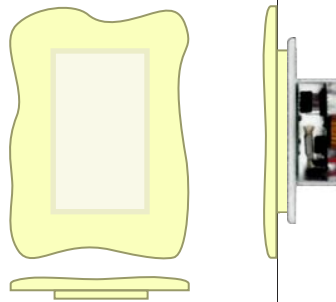
3 WAYS TO INSTALL ANIGMO ELECTRONIC SWITCH



1. Conventional Installation
The Control Unit is installed like a regular Switch with its Face Plate resting on top of the wall surface. A cutout is required on the back side of the Wall Plate to achieve a snug fit.



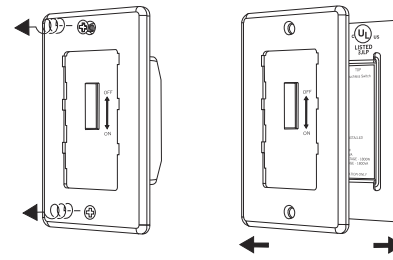
2. Flush Installation
The Control Unit is installed with its Face Plate flush with the wall surface. Wall Plates do not require any cutout on the back side. Any generally flat object can be used as a Wall Plate.



3. Recessed Installation
The Control Unit is installed with its Face Plate recessed relative to the wall surface. This situation is very common when working with thicker wall coverings such as tile, stone or wood.

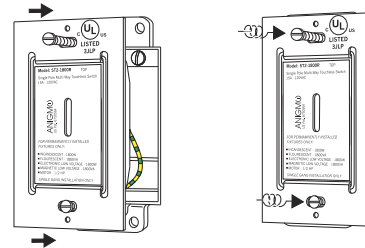
INSTALLATION INSTRUCTIONS

1. **WARNING** :Turn the power OFF at Circuit Breaker or remove fuse.
2. Remove the existing switch from wall box.
3. Prepare the Switch Unit for installation by removing the two Face Plate screws and the Face Plate itself.

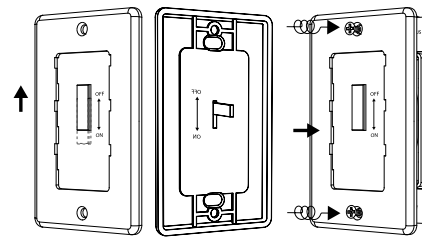


4. Connect wires as per corresponding wiring diagram. See reverse side of this document.

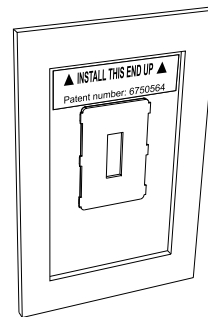
5. Mount the Switch Unit into wall box, align before tightening the screws.



6. Before installing the Face Plate make sure power tab is in the off (upper) position and arrows are pointing up.
CAUTION: Do not over-tighten mounting screws.

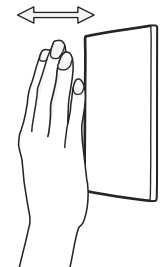


7. Installing the Wall Plate and activating the Switch Unit :
 - a) make sure the power tab is in OFF (upper) position.
 - b) make sure that arrows on the back of the Wall Plate are pointing up.
 - c) push the Wall Plate against the face plate until it snaps in then slide it down approximately 1/2".
 - d) remove hand away from the Switch Unit, wait 10 seconds.
 - e) switch is now ready for use.



Back side of the Wall Plate

WAVE
to turn the light On/Off



ANIGMO

Touchless Electronic Switch

Incandescent/Fuorescent Line Voltage
 Magnetic/Electronic Low Voltage/Motor Load
 Model No. ST2-1800R, ST2-1800RC
 120VAC, 60Hz / 15 A

UL File # E306327

Important notes

CAUTION:

1. Read and understand these instructions before installing device. Before installing this unit, disconnect power at circuit breaker or remove fuse to avoid shock or damage to the unit. This device is intended for installation in accordance with the National Electric Code and local regulations. It is recommended that a qualified electrician performs this installation.
2. Single gang installation only!
3. Installation of this device in proximity of strong EM (electro magnetic) interference such as (and not limited to): Electrical welding equipment, inadequately shielded power Suppliers, radars and similar, could cause inadvertent switch activity.
4. This switch man not be used on any application in which the Inadvertently changed switch state could create a situation where personal injury or death may occur.
5. Do not install in combination with standard 3-way switches or third party remote control units. Use only in combination with Anigmo ST2-S remote slave unit.

Contact

Anigmo
 1040 Avenue of the Americas
 New York, 10018 NY
 Tel: 1 800 749 0518
 Fax: 1 800 749 0519
 Email: support@anigmo.com www.anigmo.com

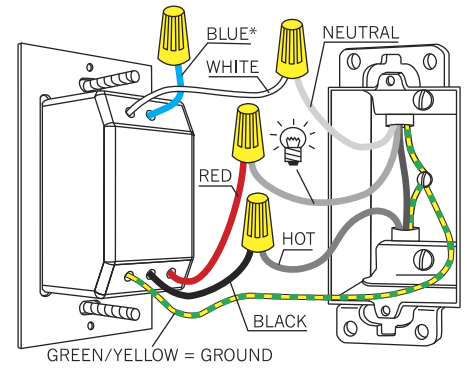
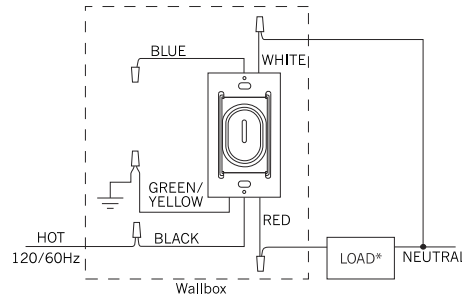
Warranty

Anigmo will, at its opinion, repair or replace any unit that is defective in materials or manufacture within 5 years after purchase. For warranty services, return the unit to place of purchase. This warranty in lieu of all other warranties, express or implied, and the implied warranty of merchantability is limited to 5 years form purchase. This warranty does not cover the cost of installation, removal or reinstallation, or damage resulting from misuse, abuse or damage from improper wiring installation. This warranty does not cover incidental or consequential damages. This warranty gives you specific legal rights, and you may have other rights which may vary from state to state. Some states do not allow the exclusion or limitation on how long the implied warranty may last, so the above limitations may apply to you. This product is covered under US patent: 6750584, other domestic and foreign patents pending.

SWITCH TYPE	LOAD TYPE	Magnetic Low Voltage	Motor
	Incandescent/ Fuorescent Line Voltage Electronic Low Voltage		
ST2-1800R	1800 W	1800 VA	1/2 HP
ST2-1800RC	1800 W	1800 VA	1/2 HP

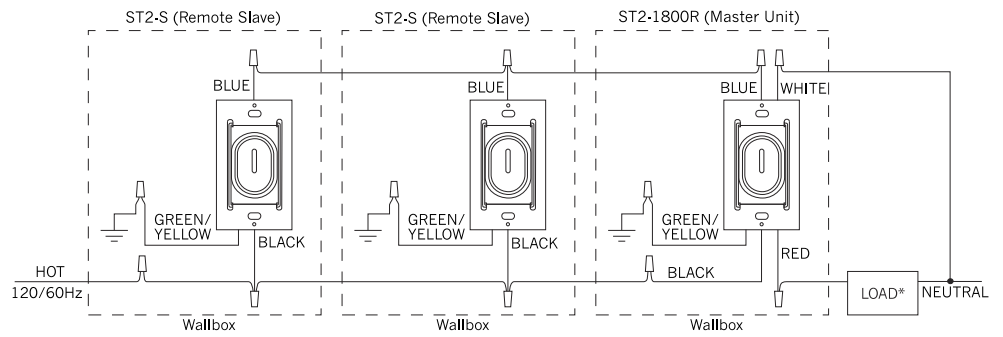
model: ST2-1800R

SINGLE LOCATION CONTROL



Connect wires as shown. Refer to wiring diagrams. **IMPORTANT!!!** - Make sure black wire is connected to HOT in the wall box.

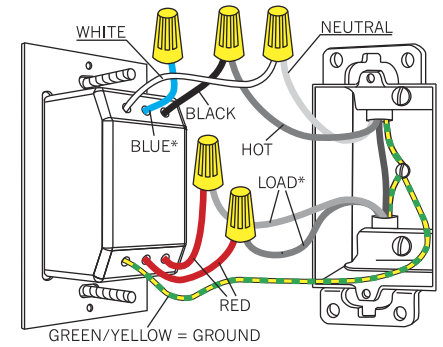
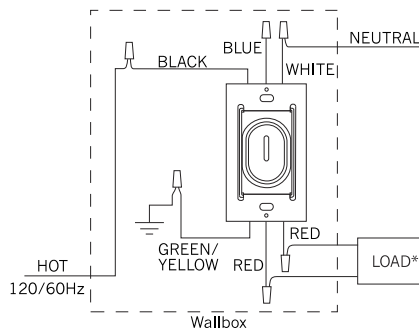
MULTI LOCATION CONTROL



*See Load ratings for more informations

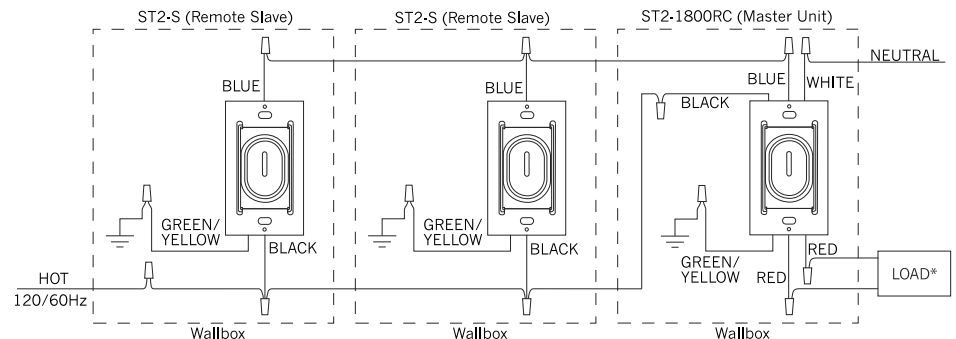
model: ST2-1800RC (with isolated relay)

SINGLE LOCATION CONTROL



Connect wires as shown. Refer to wiring diagrams. **IMPORTANT!!!** - Make sure black wire is connected to HOT in the wall box.

MULTI LOCATION CONTROL



*See Load ratings for more informations